



Bloy's Grove Solar

Bloy's Grove Solar Farm – an update

Planning consent

EDF Renewables UK is pleased to have received planning permission from South Norfolk District Council to construct a 49.9MW solar farm at Bloy's Grove. We will now work closely with the local community and the council to plan the next steps towards construction and operation.

Bloy's Grove Solar Farm is an important renewable energy project, particularly so at a time when the UK is focused on tackling climate change, securing our energy supplies, and bringing down the costs of electricity.

Public meeting

EDF Renewables UK is organising a meeting for residents to provide information about the traffic, access and cable route application at 7pm, Monday 28th November 2022 at St Peter's Church, Swainsthorpe.

You are most welcome to attend to find out more and put your views forward.

Planning conditions

The planning consent comes with certain conditions we must discharge before beginning construction to help minimise potential impacts.

We are working with our environmental consultants to discharge the pre-commencement planning conditions so that they fully comply with the requirements of the Council. These cover construction, a Construction Traffic Management Plan and arrangements for on-site

parking for construction workers, a noise and dust management plan, which will include hours during which certain activities can take place, screening, surface water drainage, ecology, lighting and decommissioning including recycling of the solar modules.

You will be able to contact someone from EDF Renewables UK during the construction period to raise any issues.

Bloy's Grove Solar Farm – at a glance

- 49.9 MW
- First-of-a-kind partnership with Network Rail to supply clean energy equal to around 15% of their annual consumption to be used in offices, depots and railway stations across the country
- A saving of around 14,000 tonnes* of carbon dioxide emissions each year
- Community benefit fund of £20,000 per year paid annually for the 35-year lifetime of the project
- Grid connection underground to Norwich substation
- Community orchard and other biodiversity improvements
- EDF Renewables UK intend to build, own and operate the solar farm for the lifetime of the project

Solar is now one of the lowest cost forms of new, large scale electricity generation in the UK.

* Department for Business, Enterprise and Industrial Strategy (DBEIS), 2020b, UK Government GHG Conversion Factors for Company Reporting.



Community Liaison Group

We will set up a Community Liaison Group for Bloy's Grove made up of local representatives. Among the issues to be discussed will be the £20,000 per year community benefit fund, and traffic and access arrangements. We will also send local residents a newsletter prior to construction to let them know what to expect, the timescales and who to contact in EDF Renewables UK if there are any concerns.

Traffic and Access

Concerns about construction traffic were raised during the consultation and at Planning Committee especially in relation to how larger deliveries will access the site. We have committed to working with the council and local community to reduce the impacts of our construction activities. We will agree a Traffic Management Plan with the council.

We have said that we will not use the larger 44 tonne vehicles to transport the components and will use smaller vehicles (18-26 tonnes). While this will mean a greater number of deliveries it will clearly reduce potential traffic conflicts on Church Lane.

Other temporary measures that we are looking at is a one-way system so that construction traffic enters via Church Lane and exits via Brick Kiln Lane. Nothing has been decided yet.

During the operational lifetime of the solar farm there will not be significant amounts of traffic, it's likely that there will be around 1-2 permanent maintenance people on site during the working week.

The health and safety of members of the public and our construction workers is of paramount importance.

We will be finalising our plans during the next few months, and welcome input from residents. You can attend the next public meeting or contact us using the details at the end of this newsletter.

Construction timescales

It is our intention to start construction of the solar farm early in 2024, with the project fully operational by October 2024.

Where practical, materials and services for construction will be sourced from suitably qualified local and regional contractors. We will also need security, maintenance and cleaning during the operational phase of the development.

We will be asking our contractors to use as many local suppliers as possible and would like to hear from you if you feel you can offer any services. We will organise a contractor day and a local jobs fair which has worked well on other projects.

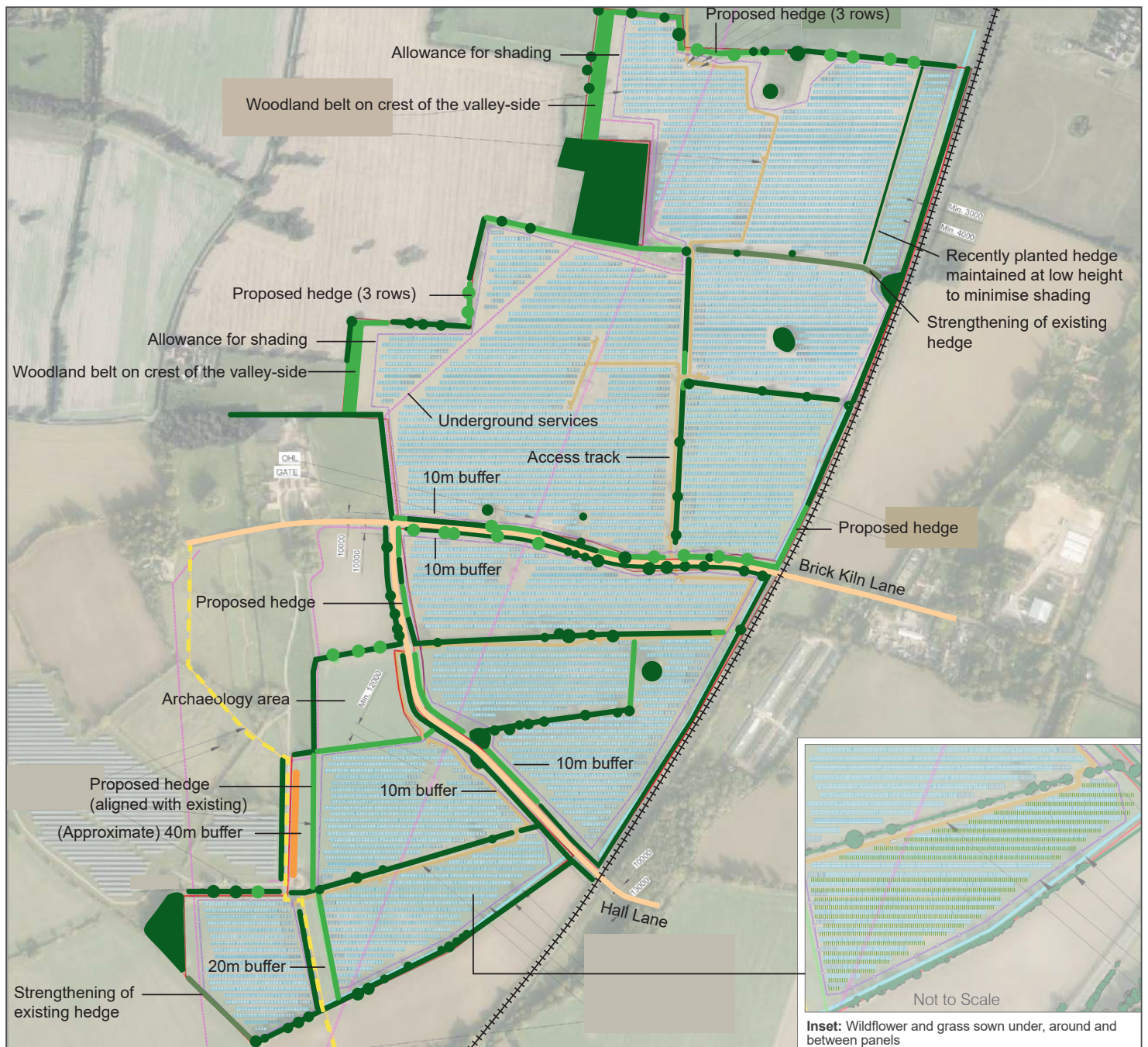
Cable route application

EDF Renewables UK has secured a grid connection offer at the Norwich substation and the connection will be made via underground cabling mostly in the verge along the public highway. We will shortly submit a cable route application to South Norfolk District Council with details of how the cables will run from Bloy's Grove Solar Farm to the substation. It is likely to follow Brick Kiln Lane and the A140, then use the bridge over the railway line to connect to the Norwich Substation. South Norfolk District Council will consult on the cable route and a decision will be made in about eight weeks.

There are no plans for overhead cabling.



Landscape strategy



© Crown copyright. All rights reserved. 2022, Licence number 0100031673

Biodiversity

A key part of our Bloy's Grove project are the biodiversity improvements. In addition to tree, hedgerow and wildflower planting, the Community Orchard is integral. We will shortly be designing the orchard and would like to hear from you on how you think it should be planted and managed.



Battery storage

There will be no battery storage on the solar farm site. EDF Renewables UK had permission to install battery storage at Norwich substation. This is no longer the case due to lack of available space at the substation. Consequently, we are looking at a location to the south of the Norwich substation.

We are now ready to consult on our draft plans, prior to submitting a planning application to South Norfolk District Council.

We will write to residents living near to the proposed battery site to let them know about the consultation and invite them to provide feedback.

As part of the fight against climate change, the UK Government has a target of cutting carbon emissions to net zero by 2050. We need to reduce our consumption of fossil fuels and increase renewable and low carbon energy generation.

Solar generation plays an important part in the UK energy mix, and the planning system supports the transition to a low carbon future.

Timeline for Bloy's Grove Solar Farm

- **2020** – EDF Renewables UK carried out site investigations and undertook environmental assessments
- **November 2020 to January 2021** – public consultation and engagement with local community representatives
- **January to March 2021** – design changes made to the proposals reflecting feedback from members of the public and statutory consultees
- **October 2021** – submission of the planning application to South Norfolk District Council
- **November to December 2021** – South Norfolk District Council conducted its own consultation
- **June 2022** – Bloy's Grove solar farm received planning consent
- **Winter 2022** – EDF Renewables UK will submit a planning application to South Norfolk District Council for the cable route to connect the solar farm to the electricity grid
- **Early 2024** – construction of the solar farm
- **October 2024** – project fully operational

About EDF Renewables UK

EDF Renewables UK and Ireland (www.edf-re.uk) is a subsidiary of EDF Group, one of the world's largest low carbon electricity companies, and our investment and innovation is reducing costs for consumers and bringing significant benefits for communities.

With our operating portfolio of 38 renewable energy sites including battery, onshore and offshore wind (together totalling 1 GW) we are providing much needed affordable, low carbon electricity. We have an expanding portfolio with almost 5 GW of projects in planning and development, including wind, hydrogen, battery and solar PV.

Please visit our website for further information
www.edf-re.uk/our-sites/bloys-grove

Or contact us
bloys.grove@edf-re.uk
 01508 500346

